



SUBLIME SAMANA

HOTEL & RESIDENCES

Group Kit

Menus | Amenities | Setups

Host Your Next Event At Sublime

Sublime Samana Hotel & Residences, located on the northeast coast of the Samaná Peninsula, offers an array of options for hosting groups. From beautiful receptions for 150 guests to intimate work conferences for company executives, Sublime Samana's beach-front location, its modern-elegant accommodations and amenities make it an ideal venue to host your next event. Browse our catering menus, event setups and amenities to learn how we can help you host the perfect event.



SUBLIME SAMANA
HOTEL & RESIDENCES

Coffee Break # 1

Assortment of loose leaf tea and freshly ground Dominican coffee
 Water and natural juices (orange, passion fruit, melon)
 Artisanal French croissant & Pain au Chocolat
 US\$ 14.00

Coffee Break # 2

Assortment of loose leaf tea and freshly ground Dominican coffee
 Water and natural juices (orange, passion fruit, melon)
 Fruit skewers and honey
 Artisanal French croissant & Pain au Chocolat
 Chocolate cookies
 US\$ 17.00

Coffee Break # 3 - Cacao Route

Freshly ground Dominican coffee with cocoa and whipped cream
 Chocolate, banana and condensed milk smoothie
 Water and natural juices (orange, passion fruit, melon)
 Chocolate bread, homemade cookies and walnut brownies
 White chocolate mousse and toasted coconut
 US\$ 21.00

Price per person

Duration: 30 minutes

Not including 18% tax & 10% service



Executive Continental Breakfast

Assortment of loose leaf tea and freshly ground Dominican coffee
 Water and natural juices (orange, passion fruit, melon)
 Seasonal fruits
 Artisanal French croissant & Pain au Chocolat
 White and multi-grain toast
 Assortment of butter and artisanal jams from Constanza
 Gourmet soda crackers and chocolate cookies
 US\$ 14.00

Executive Breakfast

Assortment of loose leaf tea and freshly ground Dominican coffee
 Water and natural juices (orange, passion fruit, melon)
 Fruits marinated in peppermint fruit punch
 Artisanal French croissant & Pain au Chocolat
 White and multi-grain toast
 Assortment of butter and artisanal jams from Constanza
 Gourmet soda crackers and chocolate cookies
 Mediterranean cheese and charcuterie board
 Peach and plum compote in cinnamon syrup
 Honey granola with yogurt and raspberries
 US\$ 22.00

Buffet Breakfast

Assortment of loose leaf tea and freshly ground Dominican coffee
 Water and natural juices (orange, passion fruit, melon)
 Artisanal French croissant & Pain au Chocolat
 White and multi-grain toast
 Assortment of butter and artisanal jams from Constanza
 Gourmet soda crackers and chocolate cookies

-Cold Bites

Fruits marinated in peppermint fruit punch
 Mediterranean cheese and charcuterie board
 Peach and plum compote in cinnamon syrup
 Honey granola with yogurt and raspberries
 Prosciutto cotto and Dijon mustard bites
 Chicken tramezzini with avocado cream
 Carrots and cucumbers with herb cream dip

-Hot Dishes

Scrambled eggs with German sausage
 Dominican mangu and fried cheese
 US\$ 35.00

*Price per person

Duration: 1 hour

Not including 18% tax & 10% service



BUFFET OPTIONS

Sandwich Station

Chicken tramezzini with avocado cream, tomato and lettuce
Prosciutto cotto and Dijon mustard on multi-grain bread
Dutch cheese, tomato confit and grilled zucchini on fugazza bread
Gravad lax salmon with dill on casabe (yuca) bread
Turkey with cucumber dressing on a baguette
Provencal focaccia with San Danielle prosciutto
Beverages: Water and soft drinks

US\$ 32.00

Sublime Buffet

Cold Dishes

Roasted turkey carpaccio, thyme croutons and caper dressing
Coconut chicken and bacon croquettes
Andalusian gazpacho with garlic and paprika focaccia from La Vera
Olives marinated in roasted garlic oil and laurel perfume
German sausage and honey mustard
Homemade guacamole with crispy fried yucca and plantain chips
Carrots and cucumbers with chive dip
Fish skewer with lemon and smoky barbecue sauce

Hot Dishes

Steak fillet with Argentinean chimichurri and grilled potatoes
Seafood and saffron paella with parsley and paprika Mediterranean dressing

Desserts

Warm brownie drizzled with condensed milk
Banana in rum caramel and chocolate croutons
Fruits marinated in peppermint fruit punch

Beverages

Water and soft drinks

US\$ 54.00

GROUP CATERING

Snack Bar

Coconut chicken and bacon croquettes
Andalusian gazpacho with garlic and paprika focaccia from La Vera
Olives marinated in roasted garlic oil and laurel perfume
Homemade guacamole with crispy fried yucca and plantain chips
Carrots and cucumbers with chive dip
Fish skewer with lemon and smoky barbecue sauce
Beverages: Water and soft drinks

US\$ 36.00

Sublime Snack Bar

Andalusian gazpacho with garlic and paprika focaccia from La Vera
Olives marinated in roasted garlic oil and laurel perfume
Gravad lax salmon with roasted pepper cream cheese and balsamic caviar
Iberian Ham DO Pedroches
Norwegian cod coconut croquettes with passion fruit mayonnaise
Fried octopus skewer and homemade aioli
Salmon ceviche with mango juice, poached lobster and pico de gallo

Beverages

Water and soft drinks

US\$ 68.00

*Prices are per person

Duration: 1 hour

Not including 18% tax & 10% service



SUBLIME SAMANA
HOTEL & RESIDENCES

Prepare with our Chef two recipes with one featured ingredient.

Menu # 1

Fresh Samana Mahi Mahi

White fish ceviche, pico de gallo and avocado
 Fillet poached in leeks and oregano with roasted tomato and white bean stew

Menu # 2

Beef Fillet

Marinated beef fillet and arugula with Parmesan shavings
 Eggplant lasagna with mozzarella and thyme braised steak

Menu # 3

Country Chicken

Consommé of chicken with bacon, corn and poached egg
 Baked chicken with onion marmalade, rosemary potatoes and roasted peppers

Menu # 4

Tomatoes from Constanza

Andalusian gazpacho with croutons and cucumber
 Zucchini and curry cream stuffed tomato with melted Grana Padano cheese

Water and soft drinks

Dessert and coffee

US\$ 54.00

*Price per person per hour

Duration 1 hour or more

Not including 18% tax & 10% service



SUBLIME SAMANA
 HOTEL & RESIDENCES

AMENITIES FOR THE GROUP



Event coordinator ensuring everything runs smoothly

Free WiFi access

36-inch projector screen

Laptop and printing services for group use

Paper and pens

Upgrade for the group leader

Bottled water



SUBLIME SAMANA
HOTEL & RESIDENCES

AUDIO & VISUAL EQUIPMENT AVAILABLE*

LED Light

Smoke Machine (1300 watts)

Bubble Machine

Standalone Camera Flash Unit

Screen + Projector

8m x 8m Screen

Plasma TV

Amplified RCF 15" Speaker

Amplified RCF 18" Subwoofer

Power Strip

Portable Electric Generator

Handheld or Handsfree Wireless Microphone

*Equipment available for an additional cost



EVENT SETUPS

Sublime Samana offers a variety of spaces for groups from a three-room Penthouse in the main building, to the Penthouse with fabulous views, to the beachside palapa. Whether arranging a work conference for 30 executives or celebrating a wedding with 150 friends and family,

Sublime offers guests the perfect space for a variety of events.

Bistro - With a cozy interior that can accommodate 20-40 people and an adjacent terrace that can accommodate an additional 25-40.

Penthouse - Located in the main building with fabulous views of the resort, this venue is ideal for intimate executive meetings.

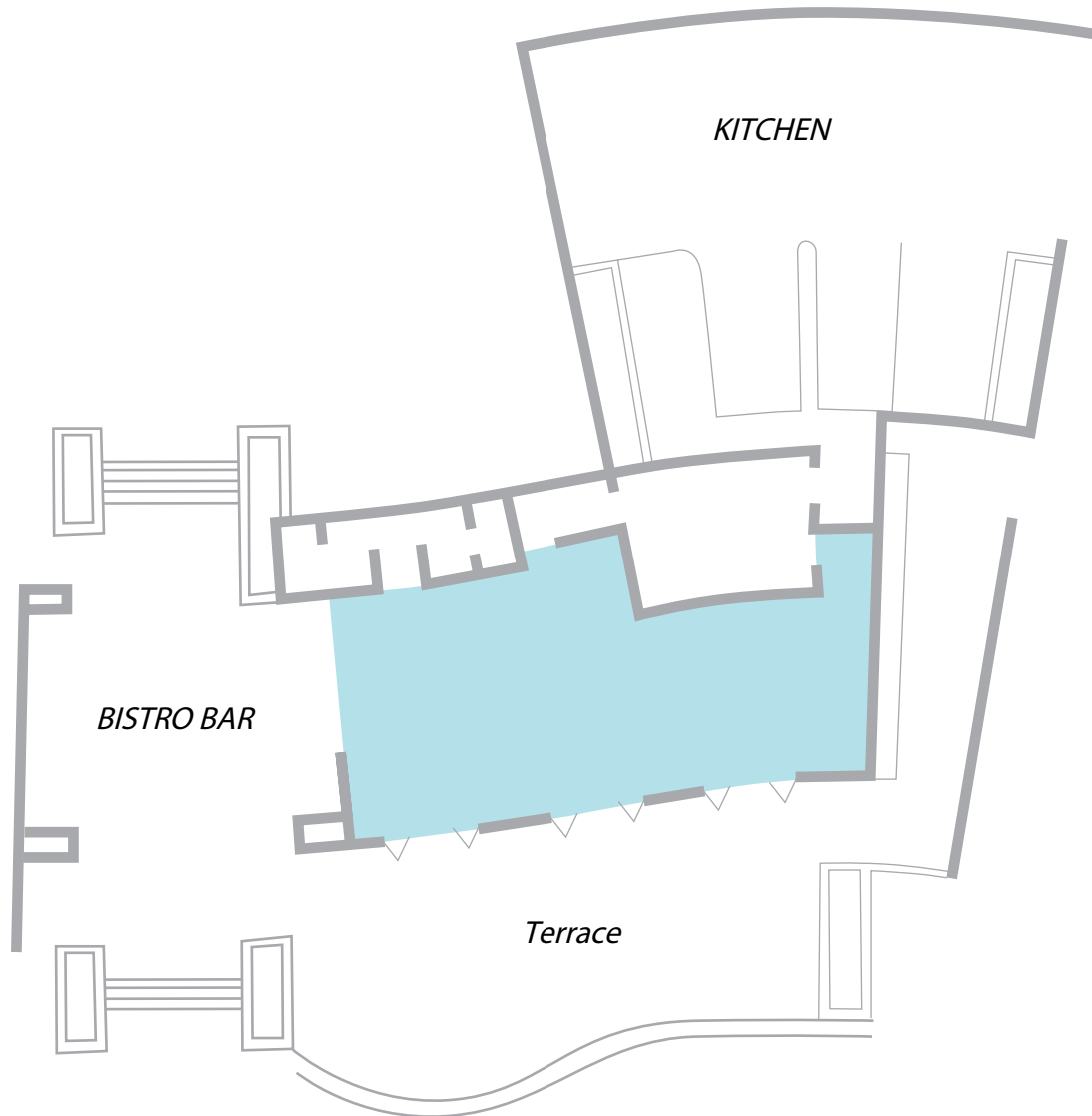
Gazebo - A more relaxed and open area perfect for more informal events like a welcome party, cocktail setup or rehearsal dinner.

Palapa - The palapa offers a flexible space by the beach for large groups up to 150 people that can be setup in different styles.



The following pages provide a number of set-ups available for groups.

BISTRO - INTERIOR

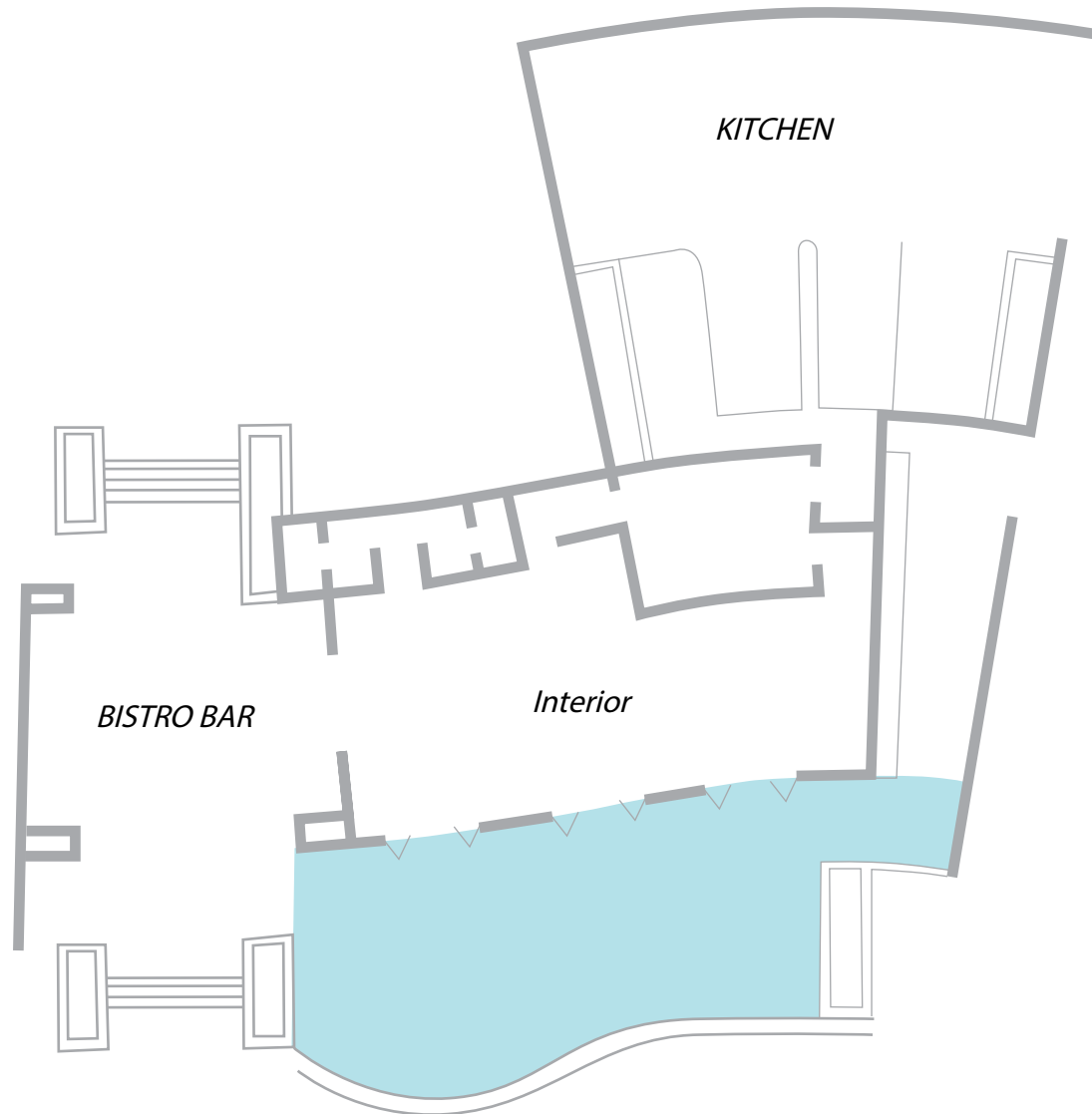


SET UP

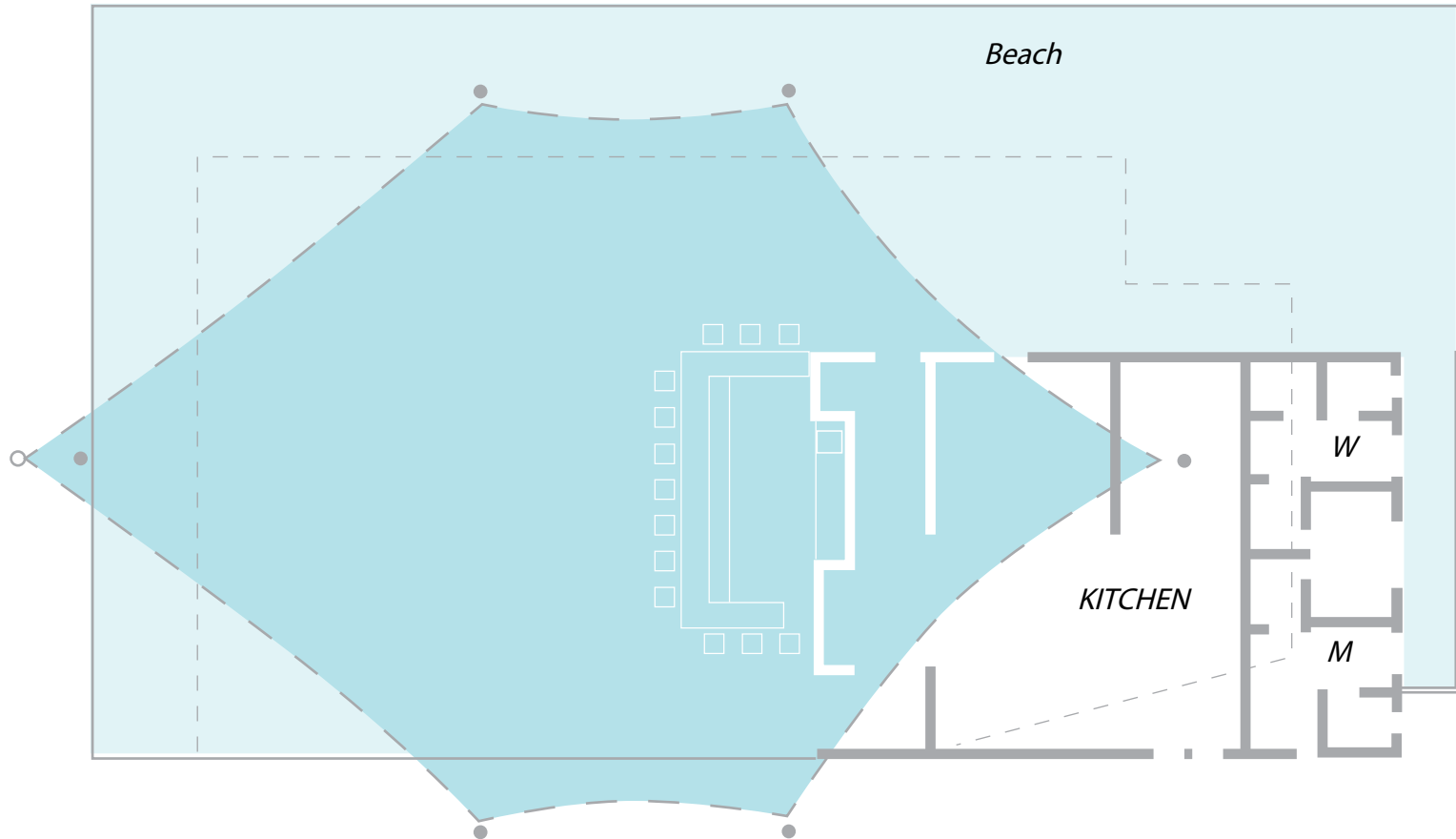
CAPACITY

Classroom	20 pax
Imperial	24 pax
Theater	40 pax
Banquet	40 pax

BISTRO - TERRAZA



SET UP	CAPACITY
Classroom	25 pax
Imperial	28 pax
Theater	40 pax
Banquet	40 pax



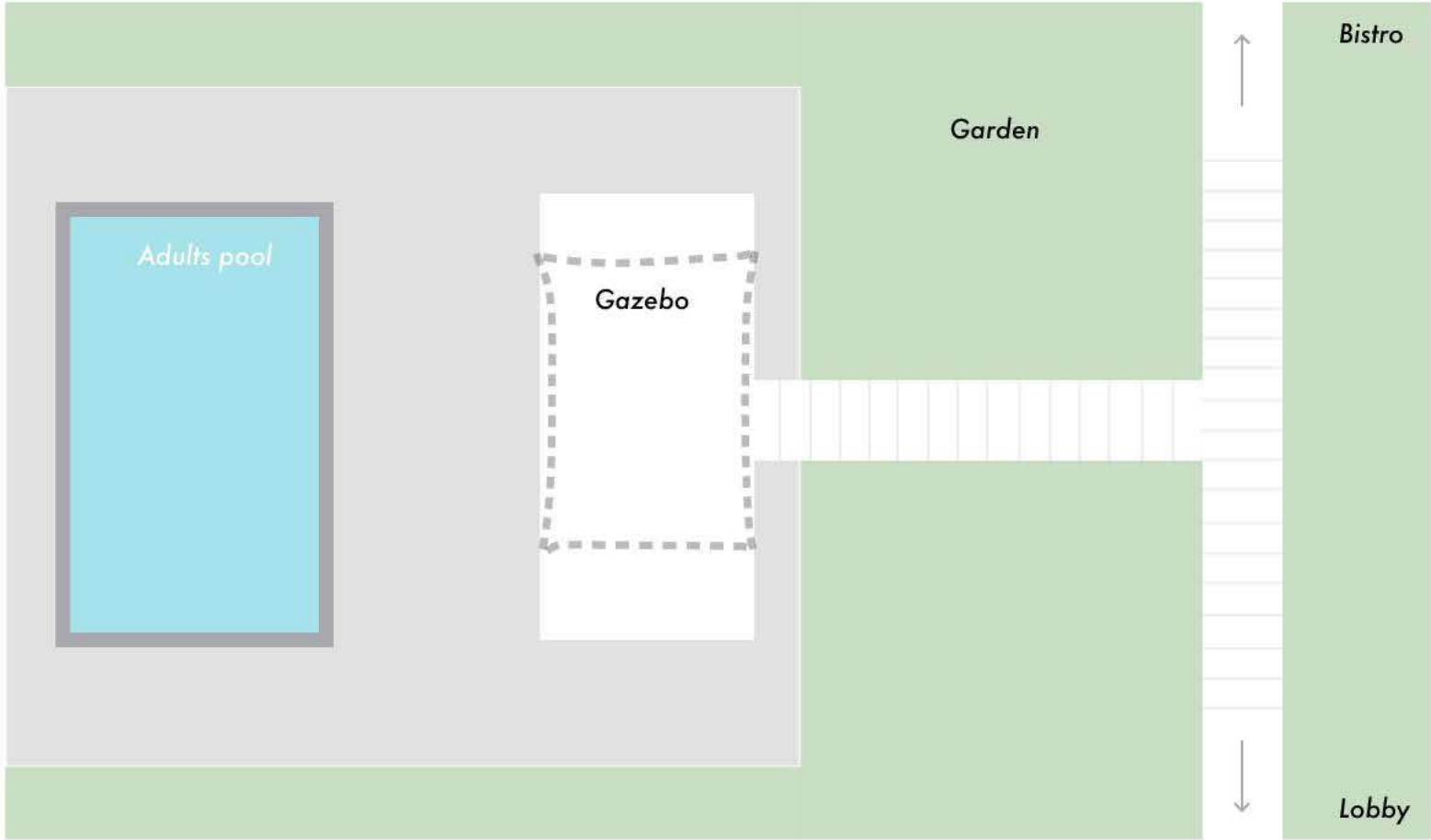
SET UP

Imperial U-Shape
Classroom
Theater
Banquet

CAPACITY

50 pax
60 pax
100 pax
80 pax or 112 w/beach

THE GAZEBO



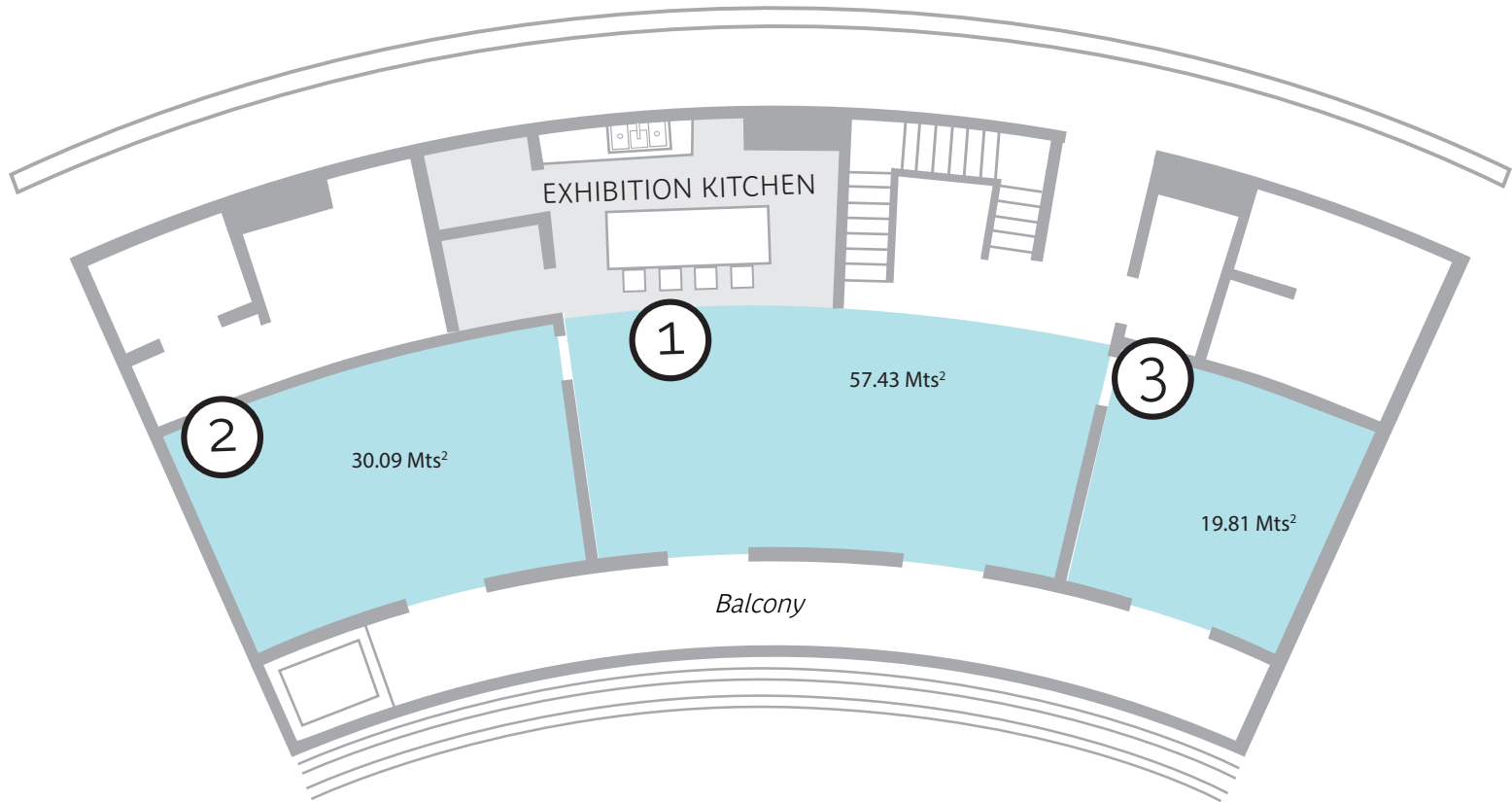
SET UP

- Banquet
- Classroom
- Cocktail
- Theater

CAPACITY

- 40 pax
- 30 pax
- 90 pax
- 50 pax

PENTHOUSE - SETTING



SET UP Room 1

Classroom
Imperial U Shape
Theater
Banquet

CAPACITY

20 pax
22 pax
30 pax
32 pax

*Room 2 & 3 available if necessary for separate meetings, Imperial set up.



SUBLIME SAMANA
HOTEL & RESIDENCES



ABOUT SUBLIME SAMANA HOTEL & RESIDENCES

On the Northeast coast of the Dominican Republic lies the dramatic lush, green tropical jungle clad hills and fine-sand beaches of the Samaná Peninsula. Tucked away in this unspoiled tropical paradise lies Sublime Samana, a modern yet elegant luxury resort and member of Small Luxury Hotels of the World™.

SLEEP Choose from 44 air-conditioned 1-, 2-, or 3-bedroom suites and casitas. Each contemporary-designed suite features floor-to-ceiling windows, spacious bathrooms, a private balcony or terrace, fully equipped kitchen, Caribbean-inspired décor, and views of the main pool or ocean.

In-room amenities also include satellite TV, complimentary WiFi, plush linens, welcome drink, fresh fruit platter upon arrival, bottled mineral water in rooms and an in-room safe. Bathrooms feature standing showers, The White Company amenities and generous closets.

SPA Sublime Samana's natural and tropical Coconut Whisper's spa is a soothing oasis. Relax, rejuvenate and recharge with a menu of rituals, including massages, facials, body wraps and the signature rain massage. At the end of a treatment, guests are treated to fresh, chilled coconut water served straight from the coconut itself to help rehydrate and replenish the body.

SAVOR Whether dining on ceviche or a refreshing lobster wrap at the casual, open-air beachside La Palapa or retreating to the more formal Bistro to enjoy snapper in coconut sauce, meals taken at Sublime always delight and satisfy.

SERVICES 24-hour reception, concierge service, daily housekeeping, laundry service, nightly turndown, room service, Event Coordinator.

POOL Two large main pools connected by two water canals with individual plunge pools. One pool is reserved for Adults while the other is family friendly.

PETS Not allowed at the hotel.

PLAY The Samaná Peninsula, regarded as one of the prettiest regions on the island of Hispaniola, offers visitors a tropical paradise that still remains unspoiled and the magic of discovery still awaits. Coconut-covered mountains that stretch down to the pristine sandy beaches, crystal-clear water teeming with coral reefs and tropical fish, and awe-inspiring waterfalls descending the lush mountainside define the region and leave much to explore. If you are looking for a place to hold team building activities, integration dynamics, coaching sessions, team work, training or R & R travel incentives, the Samaná Peninsula is the destination. Our Concierge offers a wide variety of activities and excursion to make your experience truly unique.

PRIVATE TRANSPORTATION Available to and from El Catey Airport in Samana and Las Americas International Airport in Santo Domingo. Guests using this service will be met at the arrival gate by transfer concierge and escorted to a waiting car.

WEBSITE www.sublimesamana.com



Independently minded



SUBLIME SAMANA
HOTEL & RESIDENCES